

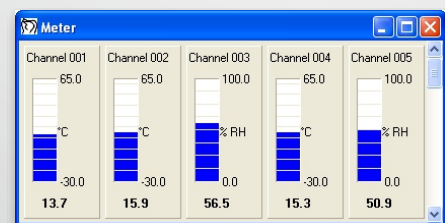
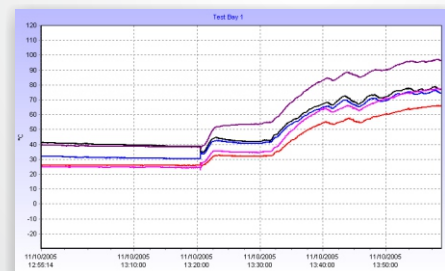
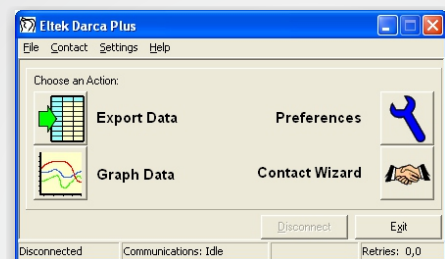
Downloading and Remote Control Application for Eltek dataloggers

Darca provides powerful but simple-to-use tools for configuring and metering Squirrel channels, changing Squirrel settings, downloading data and analysing it either graphically or statistically. Connection to the Squirrel can be made by a direct serial link, through a modem (standard or GSM), a LAN or via USB.

Three versions are available: Darca Lite with standard features, Darca Plus with enhanced features including modem support and graphing and Darca Secure for full data protection.

Key Features

- All operational control of the Squirrel may be performed using the PC
- Data can be exported into text format for analysis in a spreadsheet package
- Intelligent storage of Squirrel configuration provides fast connection to the Squirrel
- Squirrel channels may be scaled into appropriate engineering units
- Copy and Paste tools in Channel Setup for simple and fast channel configuration
- Alarm feature warns if any channel inputs are outside 'safe' limits
- Squirrel configuration may be saved as a Setup File and then applied to other Squirrels
- Contact Squirrels on a Squirrel Network
- User-friendly interface for highly intuitive operation
- Multiple windows may be displayed simultaneously to provide total control over Channel Setup and Metering
- Displays all selected channels on screen simultaneously
- Contact Wizard guides you through the stages of contacting the Squirrel
- 'Shed' utility allows scheduled, automated downloading of data from the Squirrel
- Comprehensive help for first time or experienced users
- Transmitter setup for the Gen II Telemetry System



Darca Lite

- Windows XP / Windows 7 compatible
- Baud rate selectable between 9600 and 115200 baud
- Password protection for tamper-proof operation
- Configurable refresh times of Meter Window and Squirrel status
- Memory Size Calculator optimises download time
- Connection to Squirrel via Serial Port or USB
- Printer output

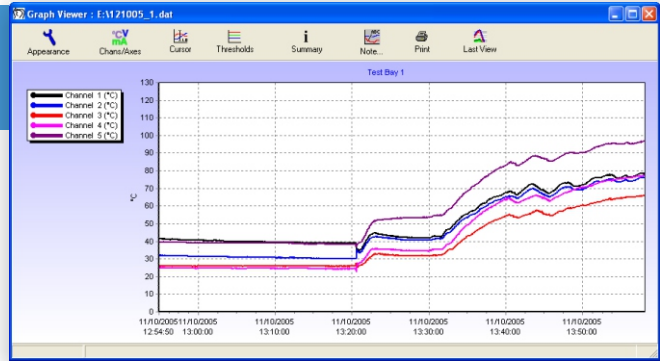
Darca Plus

- as Darca Lite
- Connection to Squirrel via GSM or ethernet
- Powerful graphing tools display real-time or historical data
 - 3D plots, line, event and windrose
 - Plot colour and axis configuration can be saved
 - Text comments can be added to points of interest
- Summary window displays data and statistical information
- Configure Gen II transmitters and map transmitters to Squirrel channels

Darca Plus Graphing Tools and analysis

Summary: E:\121005_1.dat

Channel	Channel 1	Channel 2	Channel 3	Channel 4
Start Of Data	11/10/2005 12:54:50			
End Of Data	11/10/2005 13:58:08			
Valid Data	3798	3799	3799	3799
Max Value	78.8	76.4	66.4	77.6
Time Of 1st Max	11/10/2005 13:57:38	11/10/2005 13:57:37	11/10/2005 13:58:07	11/10/2005 13:58:05
Min Value	34.2	30.2	25.2	22.6
Time Of 1st Min	11/10/2005 13:20:37	11/10/2005 13:14:44	11/10/2005 13:20:44	11/10/2005 13:20:34
Average	51.952	47.119	38.870	42.577
Sum	197313.000	179006.400	147669.000	161749.800
Std. Deviation	14.724	17.003	14.727	19.459

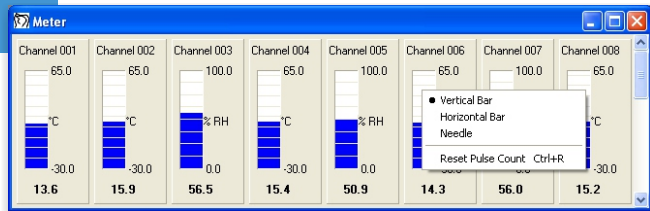


- Summary Window displays stats of current view

- Configure Graph Window: legend, gridlines and 3D orientation
- Cursor control to view raw data of a point on the graph
- Plot channel thresholds
- Powerful zooming tool
- Real Time graphing

Real Time Metering

- View metered channels as Vertical Bar, Horizontal Bar or Needle
- Intelligent resizing
- Channels in alarm are displayed in red
- Grouping of channels



Squirrel Settings

Time and Date | Intervals | Memory | Advanced | SMS

Squirrel Time: 10:00:39 | Squirrel Date: 07/02/2006

Start Time: 09:20:38 | Start Date: 07/02/2006

Delay Generator: Days: 0, Hours: 0, Mins: 0

Start Time Rounding: Do Not Round, Nearest Minute, Nearest 1/2 Hour, Nearest Hour

Buttons: OK, Cancel, Help, Auto Set, Reset Delay

Squirrel Settings / Status

- Access Squirrel Settings and view the Squirrel Status
- Delay Generator and Memory Size Calculator tools assist in setting the Start and Stop time
- Squirrel Status refreshed regularly
- Colour coding draws attention to important parameters

Squirrel Status

Log Status: Logging (red)

Mode: Interval

Trigger: Off

Time & Date: Time: 10:01:11, Date: 07/02/2006, Start Time: 10:01:07, Start Date: 07/02/2006

Miscellaneous: Battery: 8.6V, Ext. Supply: 0.0V, Name: K00544-7887, Serial No: K00544-7887, Firmware: 6.2

Memory: Total: 247000, In Use: 247000, Used: 37, Free: 246963, Mode: Hold, Source: Unknown

Intervals: Log: 00:02:00, Sample: 00:00:30

Run Text: [Empty field]

Buttons: Close, Refresh

Transmitter Setup

Squirrel Channel to Transmitter Channel Assignments

Transmitter: Tx-1627

Sensor-On time (s): 0 | Set Sensor On Time

Tx Interval: 00:00:20 | Set Tx Interval

Channel: [Empty]

Tx Chan:	Range:	Sq Chan:	Match:	Alarms:
A	Sensinon Temperature (-30.0 to 65.0 °C)	10	<input checked="" type="checkbox"/>	<input type="checkbox"/>
B	Sensinon Humidity (0.0 to 100.0 % RH)	11	<input checked="" type="checkbox"/>	<input type="checkbox"/>

Buttons: Help, Refresh, Next Transmitter >>, Close Transmitter Connections, Delete All Tx Channels, Set/Delete Selected Tx Channels, Auto Set (All Channels + Interval)

- Map transmitters to Squirrel channels
- Configure transmitter settings
- Meter transmitter inputs
- Calibrate humidity sensors

Eltek

Specialist Data Loggers
 Eltek Ltd, 35 Barton Road, Haslingfield
 Cambridge, CB3 7LL, England
 Tel: +44 (0) 1223 872111
 Fax: +44 (0) 1223 872521
 email: sales@eltekdataloggers.co.uk
 http://www.eltekdataloggers.co.uk

